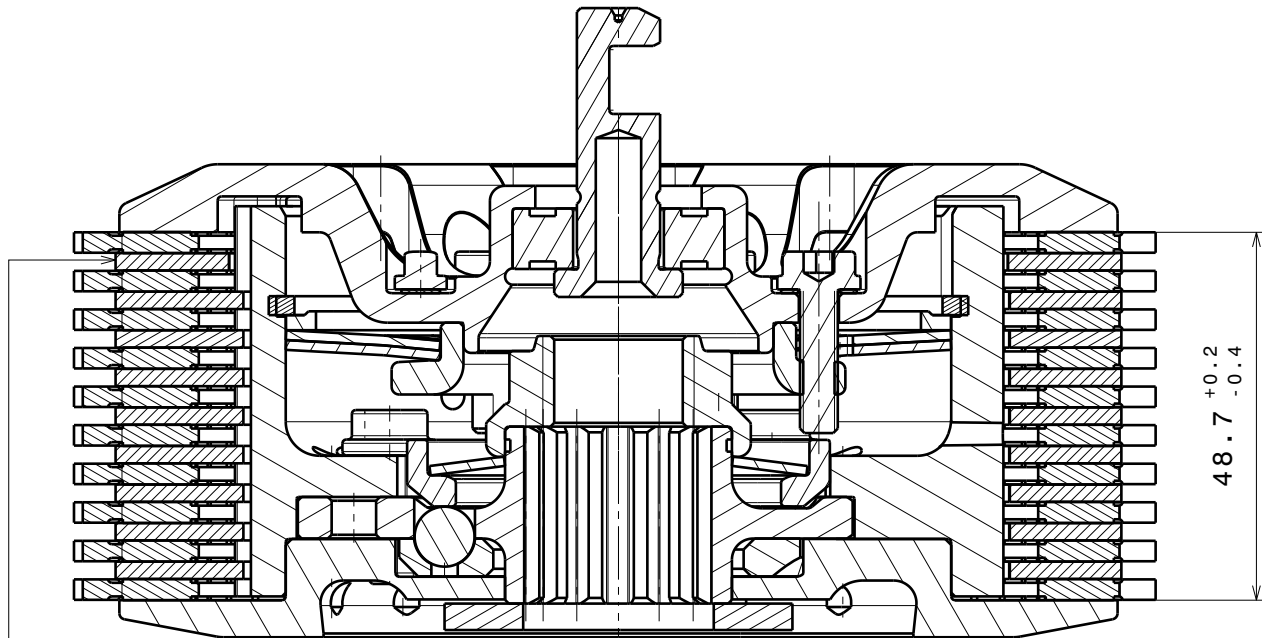
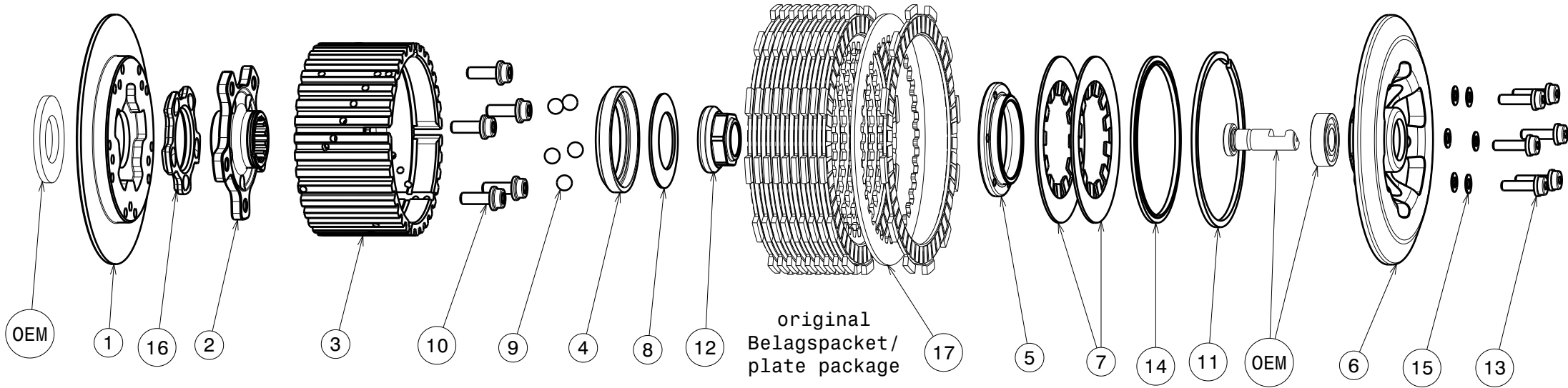


# 004-44008-0 SuterClutch BMW S1000RR 19-



Diese Stahlscheibe muss durch die mitgelieferte (Pos.17) ersetzt werden  
 This steel disk has to be replaced with the delivered one (Pos.17)

**Das angegebene Belagspaketmass ist zwingend einzuhalten!**  
**The plate package thickness must be strictly adhered to!**

Partlist: 2514			
ITEM	PART NAME	SRT NUMBER	QTY
1	Back Plate	004-44728	1
2	Hub Carrier	004-44700	1
3	Inner Hub	004-44747	1
4	Release Ring	004-12975	1
5	Clamp Hub 5mm	004-00505	1
6	Pressure Plate	004-15948	1
7	<b>Disk Spring Main Ø88 800N</b>	<b>004-88080</b>	<b>1</b>
8	<b>Torque Limiter Spring 850N</b>	<b>004-50085</b>	<b>1</b>
8.1	Torque Limiter Spring 950N	004-50095	1
8.2	Torque Limiter Spring 750N	004-50075	1
9	Ball 8mm	004-17801	5
10	Bolt M6x17	004-17802	5
11	Circlip 90mm	004-17804	1
12	Nut M20x1.5 L=4.0	004-999201540	1
13	Distance Bolt M5 L=19.0mm	004-05190	6
14	Locking Ring 88mm	004-00688	1
15	Distance Washer 0.5mm	004-00005	6
16	<b>Ramp Insert 35°</b>	<b>004-00724</b>	<b>1</b>
17	Steel Disk 2.6mm	004-15921	1